

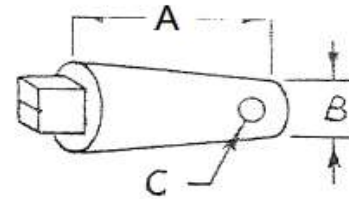
## Ductile Iron Plugs

Part Number	Plug Type	Thread Length "A"	Diameter Small End "B"	Drill P/N	Drill Size	Reamer P/N	Tap P/N
401-2101-55	A-155	15/16	0.155	407-5101-55	9/64	*	407-5301-55
401-2102-00	A-200	15/16	0.200	407-5102-00	11/64	*	407-5302-00
401-2102-01*	A-200 1/2	1/2	0.200	407-5102-00	11/64	*	407-5302-00
401-2102-35	A-235	15/16	0.235	407-5102-35	13/64	407-5202-35	407-5302-35
401-2103-27	B-1	1 7/16	0.327	407-5103-27	5/16	407-5203-27	407-5303-27
401-2103-86*	B-1/8	3/4	0.386	407-5103-86	11/32	407-5203-86	407-5303-86
401-2104-20	C	15/16	0.420	407-5104-20	25/64	407-5204-20	407-5304-20
401-2104-21	C-1	1 3/8	0.420	407-5104-20	25/64	407-5204-20	407-5304-20
401-2104-90	D	1	0.490	407-5104-90	15/32	407-5204-90	407-5304-90
401-2104-91	D-1	1 7/16	0.490	407-5104-90	15/32	407-5204-90	407-5304-90
401-2105-90	E	1	0.590	407-5105-90	9/16	407-5205-90	407-5305-90
452-2605-91	E-1	1 7/16	0.590	407-5105-90	9/16	407-5205-90	407-5305-90
452-2607-80	G	1	0.780	*	23/32	407-5207-80	407-5307-80
452-2607-86	R	1 3/4	0.780	*	23/32	407-5207-86*	407-5307-86
452-2608-40	G O	1	0.843	*	51/64	407-5208-40*	407-5308-40
452-2610-80	H	1	1.084	*	1 1/32	407-5210-80	407-5310-80
452-2611-40	H O	1	1.147	*	1 1/16	407-5211-40*	407-5311-41
452-2613-13	J	1 1/2	1.312	*	1 1/4	407-5213-10	407-5313-10

## Threadless Ductile Iron Plugs

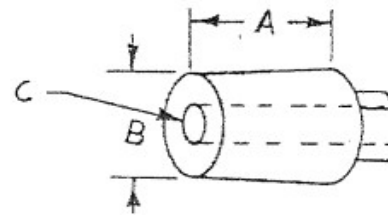
Part Number	Plug Type	Length "A"	Diameter Small End "B"	Drill P/N	Drill Size	Reamer P/N
401-2301-00	TPD	15/16	0.100	*	#30	*
401-2301-25	TPC	15/16	0.125	*	#25	*
401-2302-00	TPA	15/16	0.200	407-5102-00	11/64	407-5202-35
401-2302-89	TPB	15/16	0.289	407-5102-89*	1/4	407-5203-27

\* = Soon to be or Already No longer Available



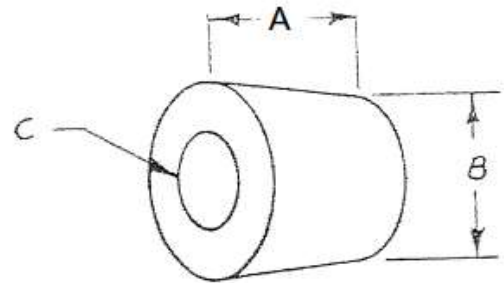
## Ductile Iron Drilled Plugs

Part Number	Plug Type	Thread Length "A"	Diameter Small End "B"	Hole Size "C"	Drill Size	Reamer P/N	Tap P/N
452-2604-24	C-1 SPEC.	1 3/8	0.420	13/64	25/94	407-5204-20	407-5304-20
452-2604-94	D-1 SPEC.	1 7/16	0.490	"U" DRILL	15/32	407-5204-90	407-5304-20
452-2605-94	E-1 SPEC.	1 7/16	0.590	3/8	9/16	407-5205-90	407-5305-90



Part Number	Plug Type	Thread Length "A"	Diameter Small End "B"	Hole Size "C"	Drill Size	Reamer P/N	Tap P/N
452-2607-83	G-3	1	0.780	11/32 .344	23/32	407-5207-80	407-5307-80
452-2607-84	G-4	1	0.780	13/32 .406	23/32	407-5207-80	407-5307-80
452-2607-87	R-4	1 3/4	0.780	13/32 .406	23/32	407-5207-86*	407-5307-86
452-2608-43	GO-3	1	0.843	11/32 .344	51/64	407-5208-40*	407-5308-40
452-2608-44	GO-4	1	0.843	13/32 .406	51/64	407-5208-40*	407-5308-40
452-2608-55	GO SHORT	5/8	0.865	17/32 .531	51/64	*	407-5308-40
452-2610-82	H-2	1	1.084	3/8 .375	1 1/32	407-5210-80	407-5310-80
452-2610-84	H-4	1	1.084	23/64 .359	1 1/32	407-5210-80	407-5310-80
452-2611-42	HO-2	1	1.147	3/8 .375	1 1/16	407-5211-40*	*
452-2611-44	HO-4	1	1.147	23/64 .359	1 1/16	407-5211-40*	*
452-2613-14	J-2	1 1/2	1.312	1/2 .500	1 1/4	407-5213-10	407-5313-10

\* = Soon to be or Already No longer Available



## Ductile Iron Caterpillar Drilled Plugs

Part Number	Plug Type	Thread Length "A"	Diameter Small End "B"	CT BORE Part Number	CT Bore Size	Reamer P/N	Tap P/N	Thread I.D. "C"
452-2615-24	3/4-12 J	1 1/2	1.312	434-6513-20	1 1/4	407-5213-10	*	3/4 - 12
452-2615-28	3/4-12 JO	1 1/2	1.375	434-6513-22*	1 5/16	*	*	3/4 - 12
452-2615-44	7/8-12 J	1 1/2	1.312	434-6513-20	1 1/4	407-5213-10	*	7/8 - 12
452-2615-48	7/8-12 JO	1 1/2	1.375	434-6513-22*	1 5/16	*	*	7/8 - 12
452-2615-64	1-12 M	1 1/2	1.760	436-6518-21*	1 11/16	*	*	1 - 12
452-2615-68*	1-12 M O	1 1/2	1.823	436-6518-22*	1 3/4	*	*	1 - 12
452-2615-74*	1 1/8-12 M	1 1/2	1.760	436-6518-21*	1 11/16	*	*	1 1/8 - 12
452-2615-78*	1 1/8-12 M O	1 1/2	1.823	436-6518-22*	1 3/4	*	*	1 1/8 - 12
452-2615-84*	1 1/4-12 M	1 1/2	1.760	436-6518-21*	1 11/16	*	*	1 1/4 - 12
452-2615-88*	1 1/4-12 M O	1 1/2	1.823	436-6518-22*	1 3/4	*	*	1 1/4 - 12

\* = Soon to be or Already No longer Available